



THE ULTIMATE FASHION ACCESSORY

CHEVROLET SPARK  FOREVER



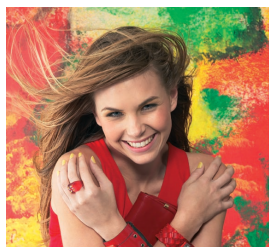
Additional Luxury Features (LS Model)

Air Conditioning

Remote Adjustable Rear View Mirrors

Electric Windows (Front)

Key Operated Central Locking



Safety Features (All Models)

Collapsible Steering Column

Side Impact Protection

Rear Door Child Locks

Child Seat Anchorage

Centrally High Mounted Brake Light





Technical Data Profile

Transmission: Front Wheel Drive, 5-speed Manual

Fuel Tank: 35 litres

Fuel Type: Unleaded

Front Suspension: McPherson Struts

Rear Suspension: Isolated Trailing Link

Seats: 5

Boot Capacity: 145 – 830 litres



Performance Profile

Engine Capacity: 800cc

Power: 37.5kW @ 5900 rpm

Torque: 68.6Nm @ 4600 rpm

Fuel Consumption:

City: 7.9 litres/100km

Highway: 5.1 litres/100km





Security Features (All Models)

Automatic Engine Immobilizer

Steering Lock



Available in an assortment of fashionably funky colours!

(Consult your Chevy Dealer)



The cheeky Chevy Spark, it's small but it sure packs a punch!

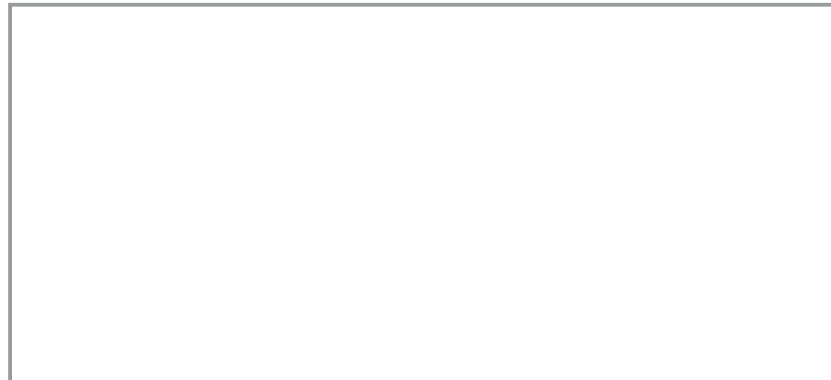


Looking good behind the wheel has just become a little easier. The Chevy Spark might be small in size but it's certainly big on attitude. It's zippy, sexy, sassy, a bold fashion statement. And on top of trendy good looks it's also incredibly economical, promising never to leave a dent in your pocket. It's not only perfect for city driving but also the perfect fashion accessory, ensuring that you become the centre of attention, wherever you may find yourself. Wear it and watch heads turn...





The above information was effective as of 1 July 2004, and is subject to change without notice. E&OE.
Visit www.chevrolet.co.za or phone the Chevrolet hotline: 0800 422 777



Chevrolet Dealer Stamp